



SIMPLE AND EFFICIENT INTERNET ACCESS

Alcatel **OmniPCX Office**

Alcatel OmniPCX Office is an e-communication appliance that integrates all the communications requirements of small to medium-sized companies—Internet, voice and data—into a single system.

Alcatel OmniPCX Office offers features that enable businesses to use the Internet in a professional manner: performance, security, cost-control and efficiency.

Making the Internet simple

Alcatel **OmniPCX Office** makes it easy to use the Internet by integrating all the networking components into a single system. This allows companies to work with the Internet in an extremely professional manner. It provides performance, security, efficiency and cost-control. The all-in-one concept of **OmniPCX Office** enables the user to benefit from secure, shared Internet access.

OmniPCX Office also features a wide range of WAN interfaces, embedded certified firewall, proxy/cache server, e-mail server, intranet server, file server, VPN capabilities for remote access and support of the major Internet protocols and standards.

Performance

Alcatel **OmniPCX Office** is an Internet access router that provides your users with a single shared Internet access with up to 10 Mbps of bandwidth. The embedded cache server improves Internet access and reduces connection time when the information requested is already stored in the cache server.

Security and control



Alcatel **OmniPCX Office** has an embedded firewall that has been awarded the West Coast Labs Checkmark. This certification is

based on rigorous independent testing and is considered definitive proof that it has reached the relevant security standard.

In addition, **OmniPCX Office** complies fully with leading edge anti-virus solutions, protecting hosts as well as Internet traffic such as e-mail, Web and file transfer.

OmniPCX Office includes additional control mechanisms, such as a proxy server for user access and Web filtering as well as time-based accessibility. The Alcatel **OmniPCX Office** backup procedure contributes to a comprehensive security solution, allowing the restoration of company-critical data including all **OmniPCX Office** Voice and Internet information.

SIMPLE AND EFFICIENT INTERNET ACCESS

Alcatel **OmniPCX Office**

Integrated electronic messaging

Integrated electronic messaging, Alcatel **OmniPCX Office** raises your company's communication level with its integrated e-mail server, allowing internal and external communications for each user. **OmniPCX Office** offers great flexibility of architecture, acting either as your company e-mail server or as an e-mail gateway for an existing e-mail server on your company's LAN.

Unified communication

Alcatel **OmniPCX Office** provides a flexible and powerful unified messaging solution that allows users to handle their text and voice messages in a single mailbox using their regular e-mail client and telephone set. This solution works with any standard e-mail client and can be deployed using the **OmniPCX Office** embedded e-mail server as well as any existing e-mail server.

Multi-media Web messaging

The Alcatel Web Communication Assistant in **OmniPCX Office** is a lightweight messaging solution that gives access to your voice messages and e-mails using only a regular Web browser and enables you to set up and receive calls using remote telephone association*. Accessible within the company as well as on the road, Alcatel Web Communication Assistant is the ideal turnkey solution to meet your mobility needs.

Virtual Private Networking (VPN)

OmniPCX Office provides a flexible and cost-effective remote access or multi-site networking solution based on the Internet's Virtual Private Network (VPN). The **OmniPCX Office** Internet VPN is an attractive alternative to expensive private leased lines or remote access servers. Using the standard Internet VPN protocols PPTP and IPSec, remote workers or multiple sites can be securely networked at low cost through the public Internet in order to share company

information and resources such as servers or LAN applications. End-to-end security is guaranteed by authentication and powerful encryption.

Sharing information

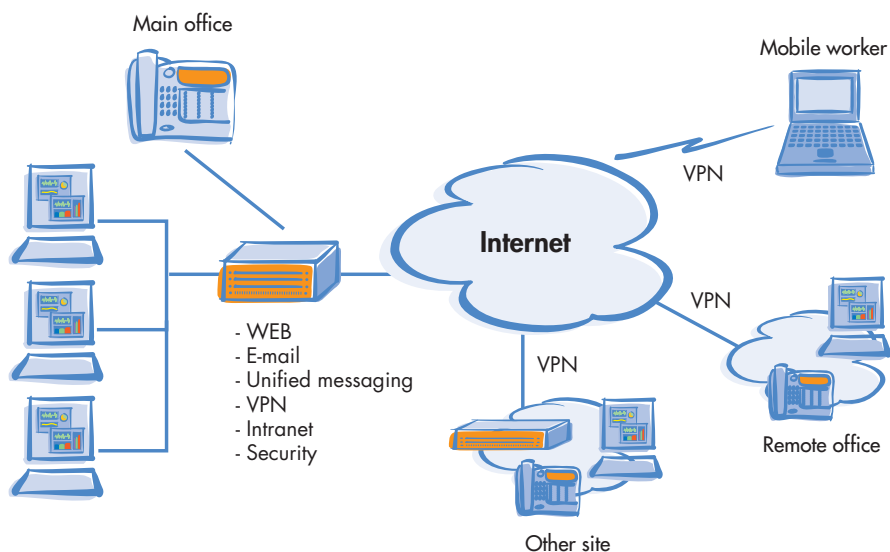
Alcatel **OmniPCX Office** provides efficient ways for users to share data. Publishing content on the **OmniPCX Office** intranet server is straightforward, thus enabling employees to access company information using their regular Web browser. In addition, a built-in file server allows users to store files in shared common storage or individual directories.

Simplicity

Alcatel **OmniPCX Office** Internet solution consists of a single system that requires no additional software installation. All components are pre-installed and simply require activation with software licenses. **OmniPCX Office** is easy to install and manage thanks to its single Web-based administration tool, including wizards for setting initial parameters. Most of the components are pre-configured, so you don't have to be an expert to set up the system.

Cost-effectiveness

Alcatel **OmniPCX Office** has been designed to meet the needs of small- and medium-sized businesses. Its pre-installed software and user-friendly administration interface dramatically reduce installation time. For example, the system automatically performs a connection test after completing the Internet access configuration. **OmniPCX Office** eliminates the need for additional investment in external Internet components such as a firewall, proxy/cache server, intranet or file server. It reduces communication costs by having a single Internet access for several users, sharing WAN resources, managing connection on demand and bandwidth allocation, optimizing e-mail traffic, and providing usage control including detailed statistics.



Technical specifications

Internet access

Capacity	200 Internet users
LAN interface	Ethernet IEEE 802.3 10/100BaseT RJ45
WAN interfaces ISDN	1 or 2 B channels Ethernet IEEE 802.3 10/100BaseT RJ45 (for DSL modem or leased lines)
WAN Connection	Dial on demand/Permanent/Call back Static/dynamic IP address support Dynamic DNS client PPP/MPPP/PAP/CHAP/PPPoE
WAN Bandwidth	ISDN (Static or Bandwidth on Demand): 64, 128 Kbps Ethernet (for DSL, leased lines): 10 Mbps

Security

Built-in Checkmark-certified Firewall	Stateful firewall Rule editor Network Address Translation (NAT)
Anti-virus	Desktop and Gateway anti-virus compatible solutions E-mail, HTTP, FTP protection

Access control

Built-in proxy server	User access restriction Group profiles Web access control Authorized/prohibited URL filters list Manual/automatic URL filters update
Access restriction	Day and times access restriction
Access monitoring	Log and statistic information by user/destination

E-mail

E-mail server	IMAP4/POP3/SMTP/ESMTP POP3 caching/SMTP server/SMTP relay support E-mail server gateway
E-mail server capacity	200 mail boxes 10 Gb storage
E-mail client	Any IMAP4/POP3/SMTP compliant client software
E-mail features	Scheduled e-mail fetching Aliases Autoreply E-mail forwarding Mailing list Multidrop POP3 Multi-domain name support Proxy POP3
Unified messaging	E-mail/voice mail/fax** ** Using Internet fax service provider.

Sharing information

Intranet server hosting	
Capacity	200 Mb
Publishing methods supported	FTP, Common Internet File System (CIFS) protocol Web-based Distributed Authoring and Versioning (WEBDAV)
File server	
Capacity	4 Gb
Protocol	CIFS

VPN

Remote access	
Capacity	50 tunnels
Supported protocols	PPTP, IPsec/PKI
Supported clients	PPTP Windows® 95/98/NT/2000/XP clients L2TP/IPsec Windows® 98, Me, NT, XP clients
Multi-site networking	
Capacity	50 tunnels
Supported protocol	IPsec/PKI
PPTP protocol	
Authentication	MS-CHAP-V2
Encryption	Microsoft® Point-to-Point Encryption (MPPE 40-128 bits)
IPsec protocol	
Key management	IKE, Diffie Hellman (DH group 1,2,5)
Security protocol	ESP, Ipsec NAT traversal
Encryption	DES, 3DES, AES
Integrity	HMAC-MD5, HMAC-SHA1
Authentication	Shared secret, X509 certificate-based with RSA signature (PKI)
PKI	X509 certificates Offline enrollment (PKCS7 & PKCS 10) Online enrollment (SCEP) Manual or automatic CRL retrieval (HTTP) Certification Authorities (PKI) support
User authentication	Built-in user database IKE-Xauth MS-CHAP (L2TP over IPsec connections)

Web messaging

Capacity	25 users
Messaging access	E-mails, voice messages, remote telephone association*
Supported browsers	Microsoft Internet Explorer 5.0® and later, Netscape Navigator 6.0® and later
Security	HTTPS, user authentication

*Country-dependent.

